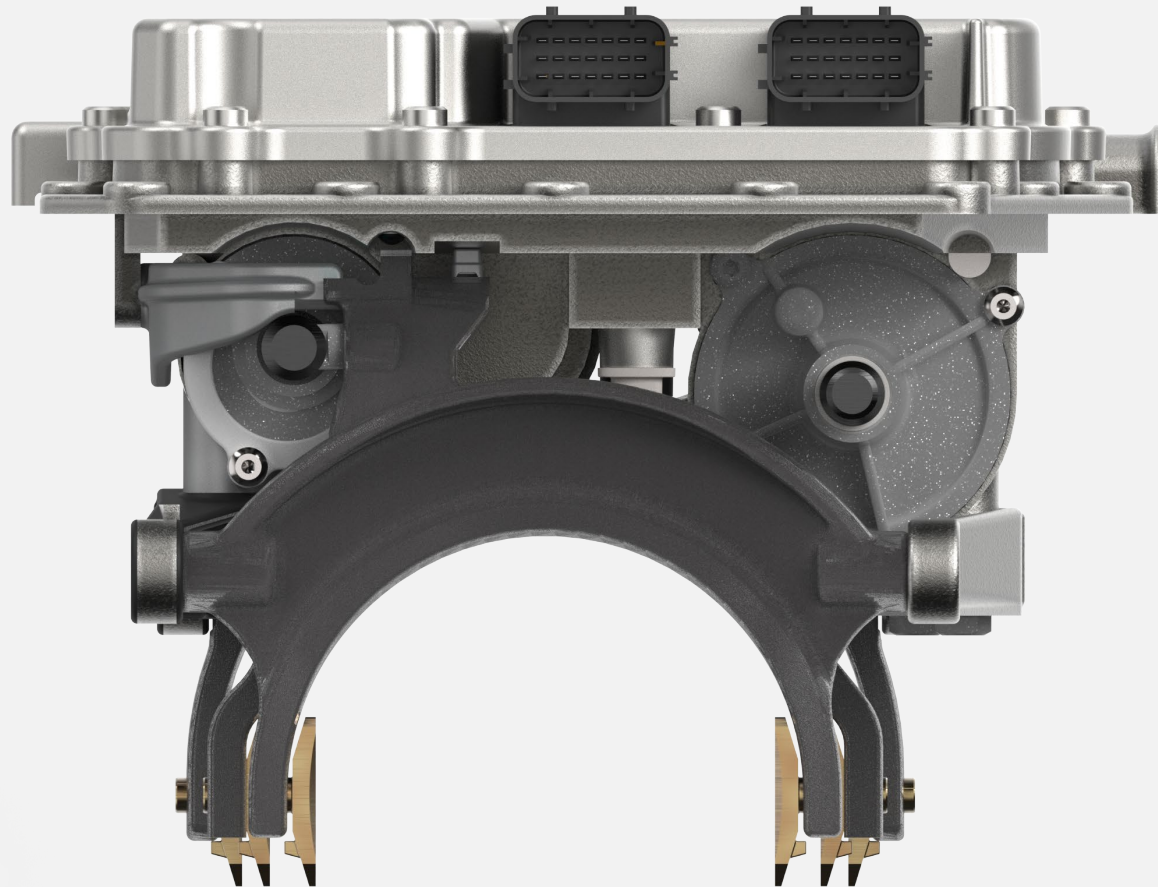


GEAR CONTROL UNIT

ELECTRO PNEUMATIC



GEAR CONTROL UNIT

AT A GLANCE

BENEFITS

APPLICATION

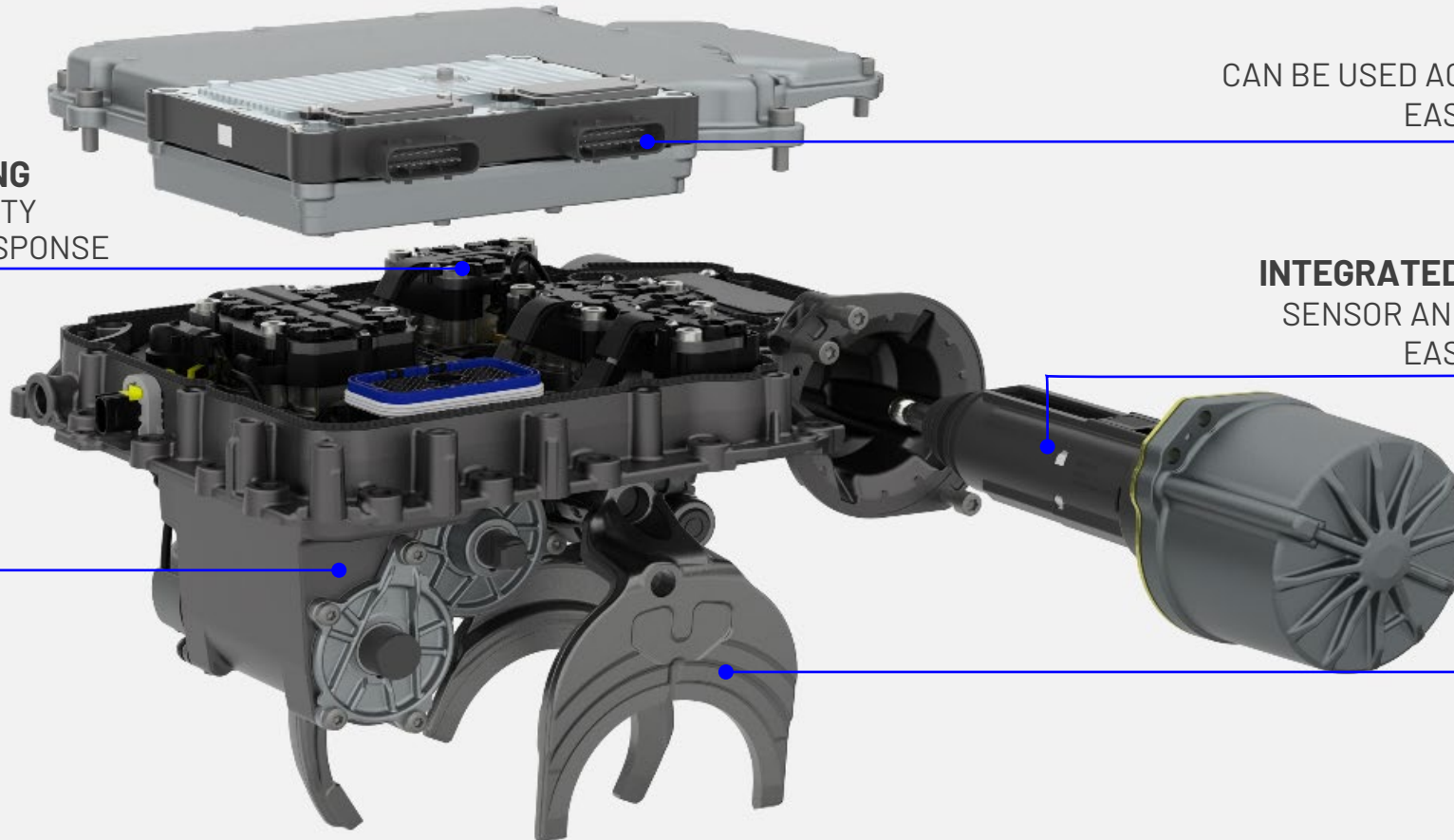
FUNCTION AND FEATURES

TECHNICAL DATA

LOCATIONS

VALVES MOUNTED DIRECTLY IN THE HOUSING
VALVES IN SHORT PROXIMITY TO CYLINDERS - QUICK RESPONSE

HPDC ALUMINIUM MONOBLOCK HOUSING
MINIMIZE PARTS
SAVE WEIGHT



TCU MOUNTED EXTERNALLY
CAN BE USED ACROSS SEVERAL APPLICATIONS
EASY REPLACEMENT FOR SERVICE

INTEGRATED LINEAR CLUTCH ACTUATOR
SENSOR AND AIR SUPPLY IN MAIN HOUSING
EASY REPLACEMENT FOR SERVICE

12 AND 18 SPEED VERSIONS



GEAR CONTROL UNIT

AT A GLANCE

BENEFITS

APPLICATION

FUNCTION AND FEATURES

TECHNICAL DATA

LOCATIONS



ROBUST AND DURABLE DESIGN



LOW TOTAL COST OF OWNERSHIP



CORROSION PROTECTION



MAXIMUM COMFORT AND PERFORMANCE FOR THE DRIVER



OUTSTANDING SERVICEABILITY
COMPONENTS CAN BE SERVICED WITHOUT REMOVING TRANSMISSION



THE ONLY GCU IN THE MARKET WITH SELF-ADJUSTING CLUTCH ACTUATOR



QUICK RESPONSE IN SYSTEM

GEAR CONTROL UNIT

AT A GLANCE

BENEFITS

APPLICATION

FUNCTION AND FEATURES

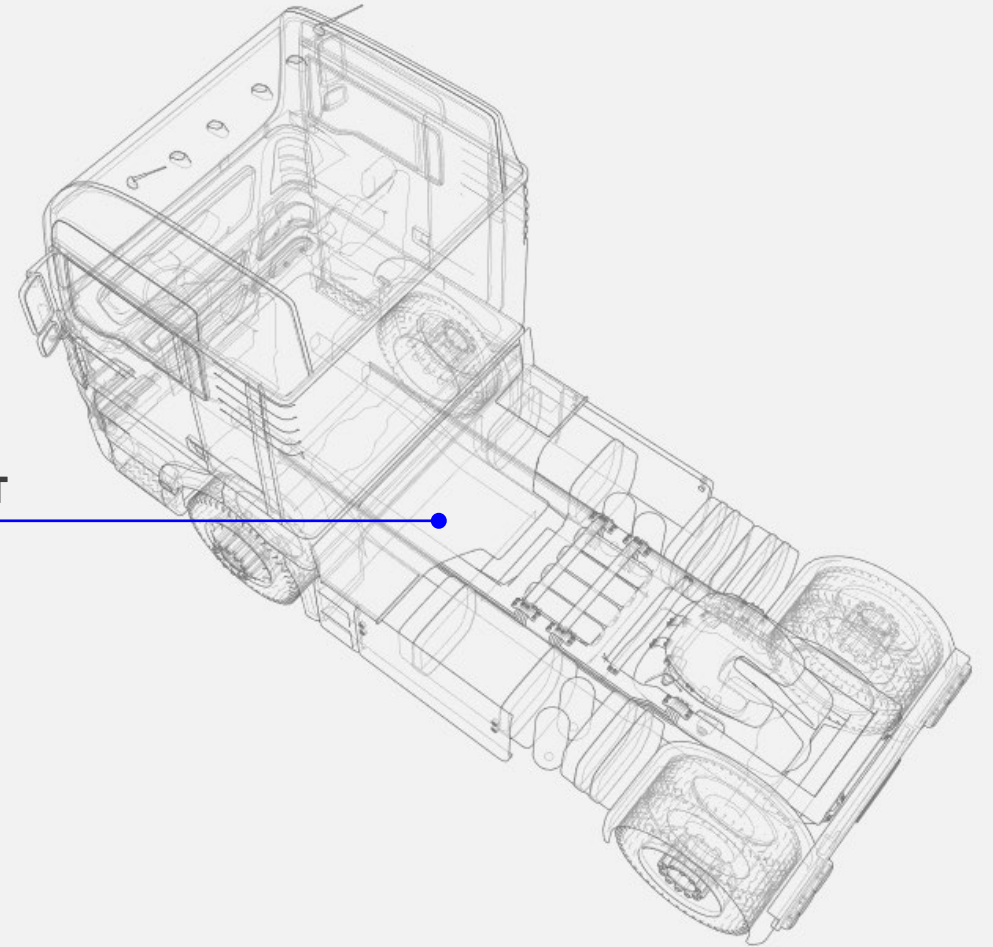
TECHNICAL DATA

LOCATIONS

The GCU (Gear Control Unit) is fitted on top of the transmission with the shift forks protruding inside the transmission.

The TCU (Transmission Control Unit) operates the electrical controlled pneumatic valves to let air in and out of the actuators. Sensors inside the GCU feedback actuator positions, rotational speed of transmission, air pressure, and temperature to the TCU.

GEAR CONTROL UNIT



GEAR CONTROL UNIT

AT A GLANCE

BENEFITS

APPLICATION

FUNCTION AND FEATURES

TECHNICAL DATA

LOCATIONS

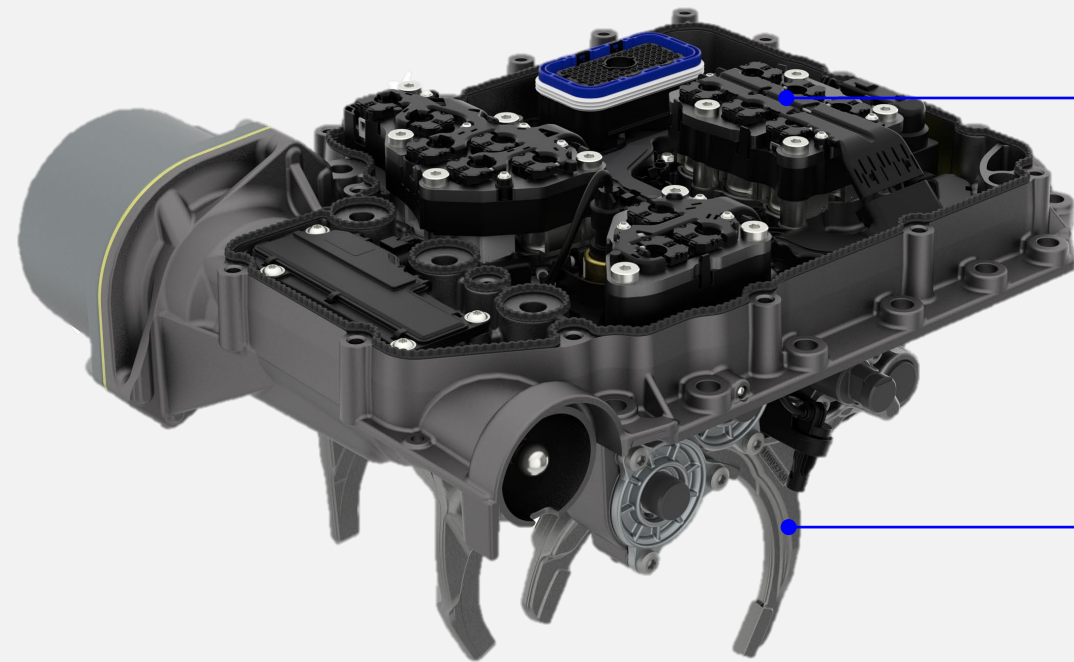
AUTOMATIC MECHANICAL CLUTCH WEAR ADJUSTMENT

ALL POSITION SENSORS IN DRY AREA

TAILOR MADE DESIGN FOR THE CUSTOMER

SUPERIOR SHIFT PERFORMANCE DUE TO

- > State-of-the-art control valves
- > All valves in close proximity to actuators
- > Intelligent valve control rather than mechanical damping to reduce delays



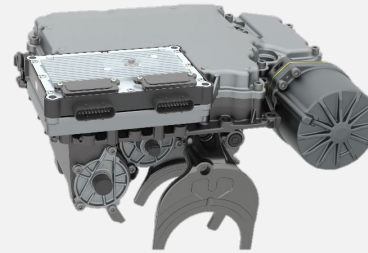
DRY AREA

WET AREA

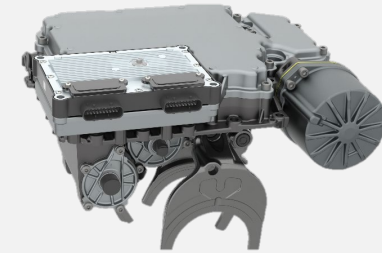


GEAR CONTROL UNIT

AT A GLANCE	BENEFITS	APPLICATION	FUNCTION AND FEATURES	TECHNICAL DATA	LOCATIONS
-------------	----------	-------------	-----------------------	-----------------------	-----------



NORTH AMERICA
12 SPEED



CHINA
12 SPEED

PARAMETER	SPECIFICATION
VOLUME	90000
COMPONENTS AND ASSEMBLIES IN THE PRODUCT	234
FUNCTIONAL AND PERFORMANCE REQUIREMENTS	500+
SPEED VERSIONS	NORTH AMERICA: 12 and 18 speed CHINA: 12 speed



NORTH AMERICA
18 SPEED

