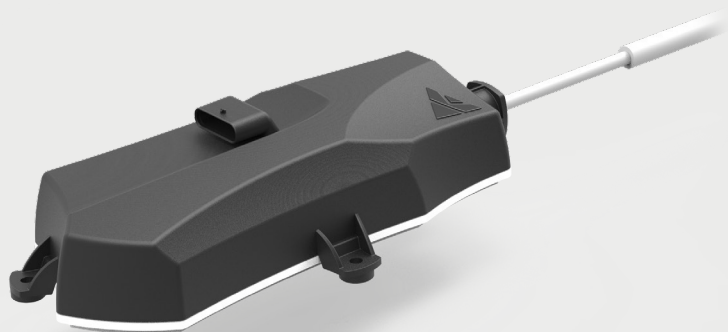


LINEAR ACTUATOR



AT A GLANCE

- > PARK LOCK ACTUATOR WITH AUTOMATIC RETURN TO PARK POSITION IF UNINTENDED POWER LOSS OCCURS WHILE DRIVING.
- > ACTUATOR CAN BE EQUIPPED EITHER WITH PISTON OR BOWDEN CABLE AS THE OUTPUT ELEMENT.
 - » PISTON VERSION IS SUITABLE FOR LOCAL ACTUATIONS WHILE BOWDEN CABLE IS MORE FOR REMOTED ACTUATIONS.
- > ACTUATOR CONTAINS EMBEDDED HW AND SW AND CAN BE INSTALLED AS A STAND-ALONE UNIT.

PRODUCT DESCRIPTION

This linear actuator is designed for applications where linear maneuvering is requested together with automatic return to origin position if unintended power loss occurs. Suitable application might be gear shifting actuation where actuator shall also automatically place transmission's gear selector shaft back to park position in case of vehicle power loss when driving.



LINEAR ACTUATOR

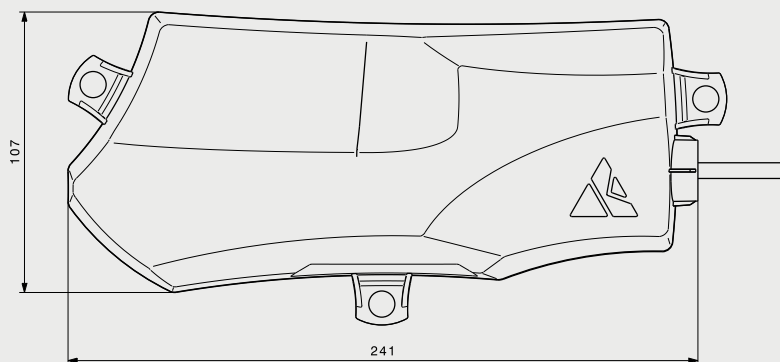
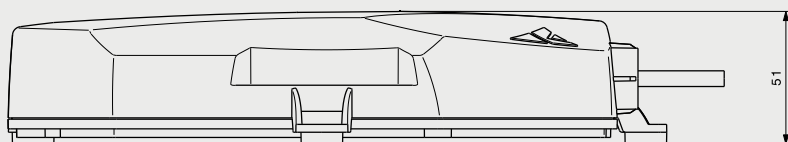


MECHANICAL SPECIFICATION

AMBIENT TEMPERATURE RANGE	-40°C to 125°C
DURABILITY	>300 000 cycles
TFORCE GUARANTEED OVER VOLTAGE AND TEMP RANGE	>450N
SHIFT STROKE	15mm
SHIFT TIME	<300ms
INGRESS PROTECTION	IP6K7 / IP6K9K

ELECTRICAL SPECIFICATION

MOTOR OPERATING VOLTAGE	12V
MOTOR TYPE	DC 55W
ISO 26262 COMPLIANCE	ASIL B
COMMUNICATION	CAN FD
EMC COMPLIANCE	CISPR 25 class 3



CHINA: WUXI JIANGSU, 214028, CHINA // T: +86 510 8528 2165

EUROPE: MULLSJÖ, SWEDEN // T: +46 392 380 00

NORTH AMERICA: NOVI, MI 48377, USA // T: +1248 468 13001

AFTERMARKET: AFTERMARKET@KA-GROUP.COM

WWW.KONSGBERGAUTOMOTIVE.COM