

Enhancing the driving experience



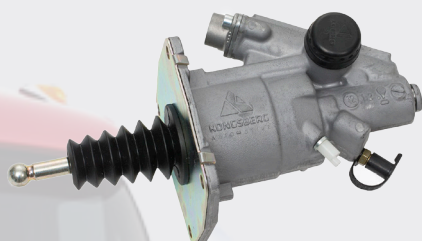
CLUTCH SERVO

Made by Kongsberg Automotive

Kongsberg Automotive has produced clutch servos since 1975. Today, we are market leader with a wide range of solutions in the clutch servo product family. Our solutions are being used by truck and bus OEMs in all corners of the world.



Kongsberg Automotive
Genuine Spare Part

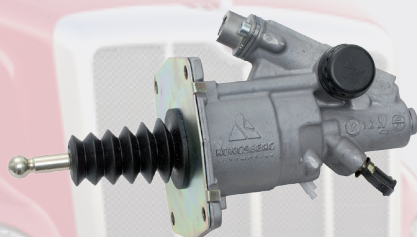


1000285721AM Ø63 mm

Application:	Peterbilt 579/567/587
---------------------	--------------------------

Cross reference:	E17-6012
-------------------------	----------

Brake fluid

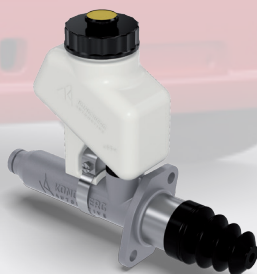


1000302236AM Ø63mm

Application:	Peterbilt 579/567/587 PTO
---------------------	------------------------------

Cross reference:	E17-6014
-------------------------	----------

Brake fluid



1000284701AM Ø22 mm

Application:	Peterbilt 579/567/587
---------------------	--------------------------

Cross reference:	E17-6011
-------------------------	----------

Brake fluid



Designed for your vehicle
Compatibility between old & new parts
Tested products before leaving the factory

Find your distributor here:

