



**KONSGBERG**  
AUTOMOTIVE

# Snap Switch

Electronic Controls



## FEATURES:

- Assembly without tools or fasteners
- Proven snap-on attachment
- Engineering grade material
- OEM component part consolidation/reduction
- Compatibility with the Kongsberg Automotive Conduit Manager

## BENEFITS:

- Proven Snap-On Design
- Fastenerless Mounting
- Quick & Easy Assembly

## Product Description

The Snap Switch fitting is the latest addition to Kongsberg Automotive's snap! family of products. This fastenerless handle bar attachment accommodates a variety of standard snap-in panel mount rocker or push type switches as well as indicator lights. The compact, low-profile design can be used with a wide variety of conduits and cables as well as functioning independently as a mounted housing for switches or indicator lights.

As a leading developer and manufacturer of mechanical control cable assemblies focused on the unique needs of

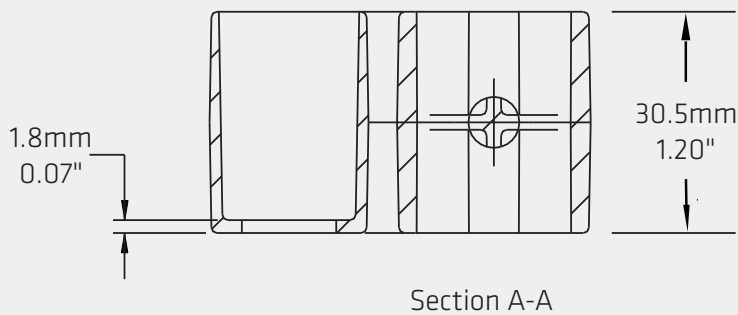
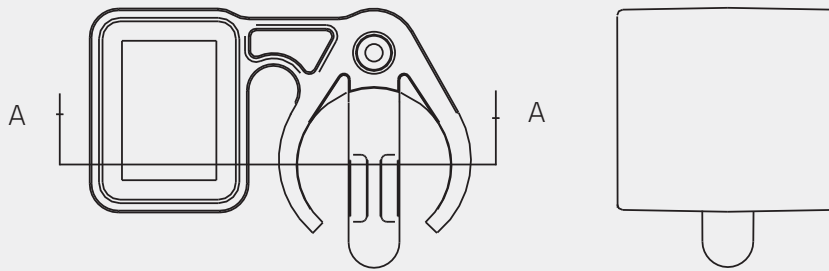
power equipment manufacturers, Kongsberg Automotive is committed to responding to its customers with innovative solutions, proven technical excellence and world class production capabilities.

## Contact:

**United States:** Kongsberg Automotive, 300 South Cochran St., Willis 77378, TX, United States  
**Europe:** Kongsberg Interior Systems Kft., Bajcsy-Zs. u. 201/D, Siófok, 8600 Somogy, Hungary  
**China:** Lone Star, 2nd Building, 777 Yuandong Rd, Nanqiao Town, Fengxian District 201401, China  
**E-mail address:** [ope.inquiries@ka-group.com](mailto:ope.inquiries@ka-group.com) (common to all sites)

## Snap Switch Fitting

Designed to accommodate a variety of standard snap-in panel mount rocker or push type switches as well as indicator lights.



Designed to snap on to a 22.2mm (7/8") diameter handle bar, with a 7.2mm/7.5mm (0.28/0.29") diameter drilled or punched mounting thru hole.

