

Electronic Systems

KAntrak™ 2700/2710 SOFTWARE DEVELOPMENT KIT (SDK)



AT A GLANCE

- All software for KAntrak™ 2700/2710 is written in "C" language, from the low-level drivers through to the high-level functions required by the application developer.
- The SDK makes available an extensive library that covers all of the aspects required to quickly develop and create a new application; graphics programming, serial communications, man-machine-interface and, of course, CAN messaging

As a high technology forward thinking company, Kongsberg Automotive not only offers well-engineered and competitively priced graphical displays, but also offers easy access to a very powerful Software Developers Kit (SDK). The SDK is the same set of software development tools our own software engineers use on customers projects. The end-user is not limited to just the functionality Kongsberg Automotive has provided in the library - the system is open and the programmer has full control over all the hardware of the KAntrak™ if required.

Kongsberg Automotive also offers our J1939 Source Code as an option that provides demo software as a starting point for application development and allows programmers to write applications much faster. This useful package also includes GEM lite, which incorporates many of the advanced functions of GEM including; selection of up to 8 languages, quad-screens, contrast and back lighting control, unit conversion, pop-up windows, and configuration menus. It also includes functions to read and display most J1939 data and an graphical library of symbols, gauges and text.

KAntrak™ 2700/2710 SOFTWARE DEVELOPMENT KIT (SDK)

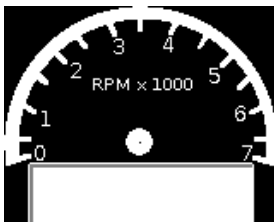
PRODUCT SPECIFICATIONS	
Compiler	The KAntrak™ 2700 and 2710 utilizes the very commonly found Siemens/Infineon C164 Microcontroller (part of the 166 family). A separate compiler needs to be purchased to work with the SDK. Kongsberg Automotive uses a product from Keil, C166 V4.22.
Engineering Support	Included in the cost of the SDK is 20 hours of Telephone / E-mail Engineering Support and product training. This is not optional and is not refundable. This time can be used to have application software started by Kongsberg Automotive if required.
J1939 Source code option for the SDK	With so many customers using the KAntrak™ displays on J1939 systems, Kongsberg Automotive makes available as an option to the SDK the core communications component of the application software from our GEM software.
Starter Kits	See separate data sheet on the KAntrak™ Starter Kits.

FEATURES:

- The end-user is not limited to just the functionality Kongsberg Automotive have provided in the library – the system is open and the programmer has full control over all the hardware of the KAntrak™ if required.

PART NUMBERS	
KAntrak™ 2700 Starter Kit with Compiler	922007
KAntrak™ 2700 Starter Kit without Compiler	922010
KAntrak™ 2710 Starter Kit with Compiler	922008
KAntrak™ 2710 Starter Kit without Compiler	922011
KAntrak™ 2700 KCDM Starter Kit	922012
KAntrak™ 2710 KCDM Starter Kit	922013
SDK	340010
Compiler	340002
SDK and Compiler	340011
J1939 Source Code	340012

Image examples from the J1939 Source Code graphical library:



!"#\$%&'()*+,-./0123456789:;<=>?@ABCDEFGHIJKLMNPOQRSTUVWXYZ

0123456789.°-_-

