

Electronic Systems

CANtrak GEM SOFTWARE



AT A GLANCE

- Plug and go solution for the display of J1939 and J1587 transmitted engine and transmission data
- Compatible with most diesel engines
- Adjustable contrast and backlight
- ISO and SAE standard icons are used for the parameters
- Menu and text based alarm systems are in multiple languages
- Soft function tactile and audible push-keys
- Flexible display options: multi-window screens, with analogue gauge, digital text or graphics

The Generic Engine Monitor (GEM) is an extremely powerful and versatile piece of software that allows the user to connect the CANtrak 2600/2610 display directly to the J1939 or J1587 network on their vehicle or equipment. It displays comprehensive information on engine and transmission data, active and stored alarms (where supported), and is a trip and fuel computer.

The five soft keys located at the bottom of the display are used to easily navigate through intuitive menus to configure the display. The GEM offers user selectable icon based screen layouts as well as including a comprehensive multi language text based fault warning and acknowledgements system.

Single, Tri and Quad screen layouts are available, enabling several parameters to be monitored and displayed at any one time. Integrated memory is used for data logging the parameters being monitored, which can provide invaluable diagnostic information.



TYPICAL GEM DISPLAY SCREENS

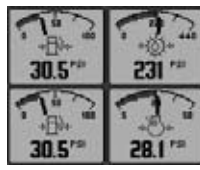
Tri-screen, analogue readout



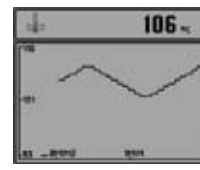
Quad screen digital



Quad screen analogue



Uni-screen, graph (history) readout



DISPLAYED DATA

IF RECEIVED FROM THE ENGINE AND TRANSMISSION ECU'S

TEMPERATURE

Engine Coolant Temp
 Engine Intercooler Temp
 Engine Oil Temperature 1
 Transmission Oil Temperature
 Turbo Oil Temperature
 Fuel Temperature
 Intake Manifold 1 Temp
 Air Inlet Temp.
 Exhaust Gas Temp
 Auxiliary Temp 1
 Engine ECU Temp
 Exhaust Gas Port 1 Temp
 Exhaust Gas Port 2 Temp
 Turbo 1 Compressor Inlet Temp

PRESSURE

Fuel Delivery Pressure
 Barometric Pressure
 Auxiliary Pressure 1
 Boost Pressure
 Air Inlet Pressure
 Air Filter 1 Differential Pressure
 Injector Metering Rail 1 Pressure
 Injector Metering Rail 2 Pressure
 Coolant Pressure
 Engine Oil Pressure
 Transmission Oil Pressure
 Clutch Pressure
 Air Start Pressure
 Injection Control Pressure

ELECTRICAL

Electrical Potential
 Battery Potential Switched
 Net Battery Current
 Alternator Potential
 Alternator Current

FUEL

Fuel Remaining
 Fuel Rate
 Instantaneous Fuel Economy
 Trip Fuel Economy
 Trip Fuel
 Trip Fuel Rate
 Total Fuel Used
 Fuel Leakage 1
 Fuel Leakage 2

SPEED

Input Shaft Speed
 Output Shaft Speed
 Engine Speed
 Turbo 1 Speed
 Engine Desired Operating Speed
 Navigation Wheel based Vehicle Speed

PERCENTAGE

Fuel Level
 Acceleration Position
 Throttle Position
 Engine Oil Level
 Coolant Level
 Estimated % Fan Speed
 Drivers Demand % Torque
 Actual Engine % Torque
 Torque Use at RPM

DISTANCE

Distance Remaining
 Trip Distance
 Total Vehicle Distance

TIME

Total Engine Hours
 Trip Engine Hours
 Service Hours

MISCELLANEOUS

Torque Converter Lock-Up
 Current Gear
 Selected Gear
 CANTX Disable

FAULTS

SUSPECT PARAMETER NUMBER DISPLAYED WITH RELEVANT MESSAGE, SUCH AS TOO HIGH/TOO LOW

Engine coolant pressure
 Accelerator Pedal Position
 Engine Load
 Fuel pressure
 Fuel level
 Water in fuel
 Engine Oil level
 Engine Oil filter differential pressure
 Engine Oil pressure
 Boost Pressure
 Intake manifold temperature
 Air inlet pressure

Barometric pressure
 Engine coolant Temperature
 Coolant level
 Transmission oil pressure
 Crankcase pressure
 Battery voltage - switched
 Battery voltage - actual
 Exhaust temperature
 Fuel temperature
 Engine oil temperature
 Transmission oil temperature

Fuel rate
 Engine speed
 Total Engine hours
 Total Fuel used
 Auxiliary Temperature #1
 Navigation Based Vehicle speed
 Engine speed sensor
 Timing Sensor
 ECU 8V DC Supply
 5 Volt DC Supply
 Engine Fuel metering

PART NUMBERS

GEM Software on a CANtrak 2600
 GEM Software on a CANtrak 2610

917030
 918030

FEATURES:

- Data is available in multiple formats and measurement units
- Choice of 8 Languages:
 - English
 - French
 - German
 - Spanish
 - Portuguese
 - Italian
 - Swedish
 - Dutch
- Engine and transmission fault data is handled by a user warning and acknowledgement system
- Comprehensive fuel management and trip computer facilities
- Automatic last screen store and a keyboard lock
- Engineering screens are available such as Comms and Message Database viewers
- Alarm data and engine source filtering are user selectable. If supported by the ECU engine configuration data can be viewed
- Users are able to specify the engine service interval prompt and also the fuel tank capacity for fuel and distance calculations
- The CANtrak displays offer proven high levels of electrical, environmental and mechanical performance in tough applications
- Customized splash screens available
- Settings can be locked using PIN code.

